

# TCX10 - Wall

## 78042-10A Installation Guide

### Included in this Product Package:



TCX10 Touchscreen  
Controller



Device Plate



Single Gang  
Bracket

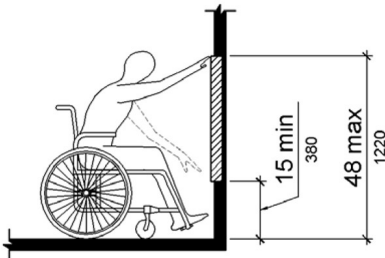


6-32 Machine  
Screws (2)



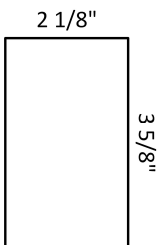
4-40 Security  
Screw

### Step 1: Select Location for TCX10



TCX10 mounting location should be conveniently and easily accessible. If possible, mount TCX10 centered between two consecutive wall studs to minimize chances of interference. Do not mount TCX10 where it may interfere with electrical wiring, water lines, or any other existing infrastructure. In order to conform to ADA standards, do not mount TCX10 higher than 48" off of the ground. TCX10, once mounted, occupies a space 10" wide & 7 1/2" tall.

### Step 2: Cut Hole for Mounting Single Gang Bracket



In desired TCX10 location, lightly sketch a 2 1/8" wide by 3 5/8" tall rectangle for locating the single gang bracket. Confirm that the space behind this rectangle is free of electrical wiring, water lines, wall studs, or any other obstructions.

Using a drywall saw, carefully cut out the rectangle, and discard the interior portion. Using a vacuum, carefully clean away any drywall dust remaining from the cutting process.

### Step 3: Mount Single Gang Bracket



Ensuring that "UL" logo is in the top left corner of the single gang bracket, firmly press the bracket into the rectangular cutout in the wall. Make sure that the bracket seats fully into the wall, with all sides flush against the outer surface.



With the bracket inserted into the wall, gently tighten the two (2) silver screws built into the bracket. These screws rotate and secure the mounting flanges against the opposite side of the wall, ensuring the TCX10 will be secure. Tighten screws until snug. *Do not overtighten*, as this can cause the bracket to warp. Once both screws are tightened, check that bracket is secure and stable.

# TCX10 - Wall

## 78042-10A Installation Guide

### Step 4: Attach the Device Plate to the Single Gang Bracket



Using the two (2) provided machine screws, attach the TCX10 device plate to the single gang bracket, ensuring that the three (3) mounting tabs are facing upwards & out from the wall. Tighten screws until snug to prevent plate from moving during installation and use. *Do not overtighten screws*, as this can cause warping of the device plate. Ensure that device plate is level and centered before tightening screws fully.

### Step 5: Route Cable out Through Device Plate

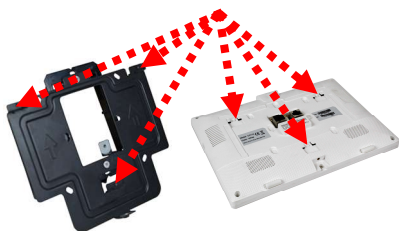


Route cable from PoE-capable network port through wall & out rectangular hole in the device wall plate. If routing cable through a Plenum, **ONLY** use cable rated for use in Plenum spaces. Pull cable through at least 6" to allow connection to the TCX10 in the next step.

### Step 6: Connect & Mount TCX10



Connect Category cable to the TCX10 port labelled "POE." If cable is connected to second port, device will not power on. Before mounting, ensure that other end of the cable is connected to a PoE-capable network. Wait for the TCX10 to power on, and confirm that it has a network connection.

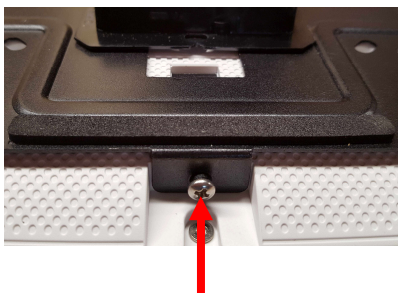


Gently push TCX10 towards device plate, ensuring that the cable does not get pinched, kinked, or bent too sharply, and that there is not excessive stress on the head.

Align three (3) indentations on back of TCX10 with the mounting tabs on the device plate. Once, aligned, push TCX10 towards mounting plate to seat tabs, then press down to lock into place.

Check that all tabs are properly seated into their mounting slots.

### Step 7: Attach Security Screw to Underside of TCX10



In the center of the TCX10 bottom edge, there is a threaded hole which aligns to a threaded hole in the device plate bottom flange. Thread this screw into the hole, confirming that the threads have mated correctly with the TCX10 & device plate. This screw prevents the TCX10 from being removed without first removing the security screw.

The TCX10 Touchscreen Controller is now fully installed. To remove for any reason, simply reverse steps 6-7.