

TCX7 - Podium

78042-7A Installation Guide

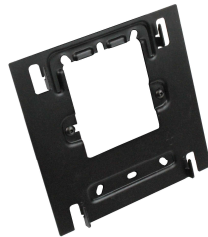
Included in this Product Package:



TCX7 Touchscreen
Controller



Mounting
Wedge



Device
Plate



Security
Bracket

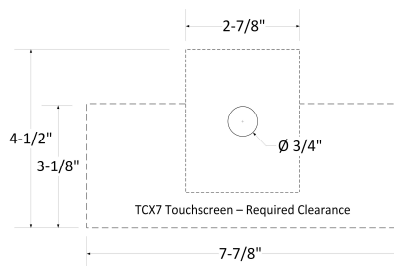


#6 Wood
Screws (4)



6-32 Machine
Screws (4)

Step 1: Select Location for TCX7



TCX7 mounting location should be conveniently & easily accessible. TCX7 should not be directly in front of or behind any other equipment.

Allow at least 3" on either side of mounting wedge. Do not mount TCX7 directly over any structural members of the furniture.

Step 2: Drill Hole for Cable Pass-Through

If drilling additional holes in furniture is prohibited:

Skip this step and proceed with installation, following directions for *over-table cable routing*.

In desired TCX7 location, lightly sketch a 3 3/4" square for locating the mounting wedge. In the center of this square, drill a 3/4" dia. cable passthrough hole.

Step 3: Attach Mounting Wedge to Surface



DO NOT OVERTIGHTEN SCREWS

If using over-table cable routing:

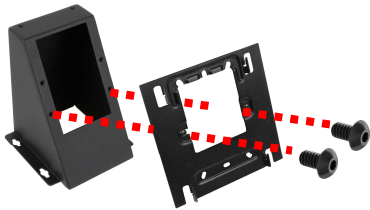
Route cable through cutout on back of mounting wedge. Run cable out through rectangular opening in mounting wedge, with at least 6" of slack.

Using the four (4) included #6 wood screws, attach the mounting wedge to the table in its intended location. Ensure that screws are snug, *but do not overtighten*, as this can cause the threads to tear through the surface and lose holding power.

TCX7 - Podium

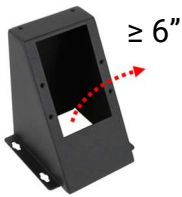
78042-7A Installation Guide

Step 4: Attach the Device Plate to the Mounting Wedge



Using two (2) of the provided black 6-32 screws, attach the TCX7 device plate to the front of the mounting wedge. Use the lower set of holes on the front face of the mounting wedge. Tighten screws until snug, *but do not overtighten*, as this can cause warping of the device plate. Ensure that device plate is level and centered before tightening screws fully.

Step 5: Route Cable up Through Mounting Wedge



If using cable passthrough hole (Step 2):

Route cable from underneath table surface through hole drilled in Step 2. Run cable out through rectangular opening in mounting wedge, with at least 6" of slack.

Step 6: Connect & Mount TCX7



Connect provided Category cable to the TCX7 port labelled "POE." If cable is connected to second port, device will not power on. Before mounting, ensure that other end of the cable is connected to a PoE-capable network. Wait for the TCX7 to power on, and confirm that it has a network connection.



Gently push TCX7 towards mounting wedge, ensuring that the cable does not get pinched, kinked, or bent too sharply. Align four (4) slots on back of TCX7 with the mounting tabs on the device plate. Once, aligned, push TCX7 towards mounting plate to seat tabs, then press down to lock into place. Check that all tabs are properly seated into their mounting slots.

Step 7: Attach Security Bracket



Using two (2) remaining black 6-32 screws, attach the TCX7 security bracket to the top of the mounting wedge. Security bracket should fit snugly over the top of the TCX7, but should not obscure any portion of the screen. Tighten screws fully.

The TCX7 Touchscreen Controller is now fully installed. To remove for any reason, simply reverse steps 5-7.