

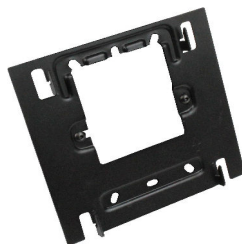
TCX7 - Wall

78042-7A Installation Guide

Included in this Product Package:



TCX7 Touchscreen
Controller



Device Plate

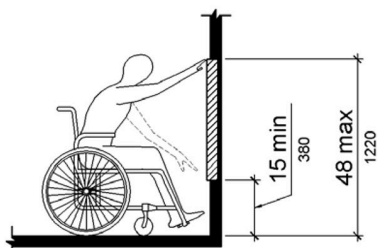


Single Gang
Bracket



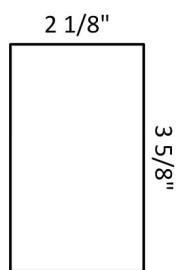
6-32 Machine
Screws (2)

Step 1: Select Location for TCX7



TCX7 mounting location should be conveniently and easily accessible. If possible, mount TCX7 centered between two consecutive wall studs to minimize chances of interference. Do not mount TCX7 where it may interfere with electrical wiring, water lines, or any other existing infrastructure. In order to conform to ADA standards, do not mount TCX7 higher than 48" off of the ground. TCX7, once mounted, occupies a space 8" wide & 5 ½" tall.

Step 2: Cut Hole for Mounting Single Gang Bracket



In desired TCX7 location, lightly sketch a 2 1/8" wide by 3 5/8" tall rectangle for locating the single gang bracket. Confirm that the space behind this rectangle is free of electrical wiring, water lines, wall studs, or any other obstructions.

Using a drywall saw, carefully cut out the rectangle, and discard the interior portion. Using a vacuum, carefully clean away any drywall dust remaining from the cutting process.

Step 3: Mount Single Gang Bracket



Ensuring that "UL" logo is in the top left corner of the single gang bracket, firmly press the bracket into the rectangular cutout in the wall. Make sure that the bracket seats fully into the wall, with all sides flush against the outer surface.

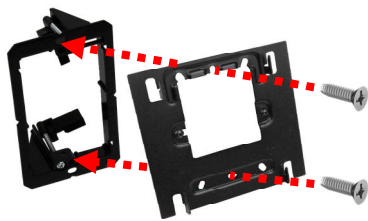


With the bracket inserted into the wall, gently tighten the two (2) silver screws built into the bracket. These screws rotate and secure the mounting flanges against the opposite side of the wall, ensuring the TCX7 will be secure. Tighten screws until snug. *Do not overtighten*, as this can cause the bracket to warp. Once both screws are tightened, check that bracket is secure and stable.

TCX7 - Wall

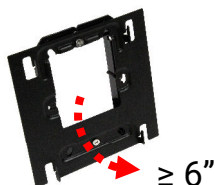
78042-7A Installation Guide

Step 4: Attach the Device Plate to the Single Gang Bracket



Using the two (2) provided machine screws, attach the TCX7 device plate to the single gang bracket, ensuring that the four mounting tabs of the device plate are facing upwards & out from the wall. Tighten screws until just snug to prevent plate from moving during installation & use. *Do not overtighten screws*, as this can cause the device plate to warp.

Step 5: Route Cable out Through Device Plate

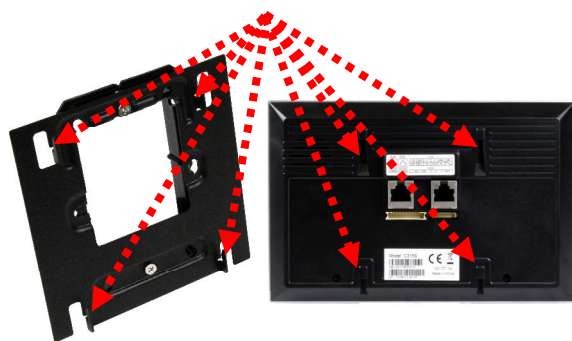


Route cable from PoE-capable network port through wall & out rectangular hole in the device wall plate. If routing cable through a Plenum, **ONLY** use cable rated for use in Plenum spaces. Pull cable through at least 6" to allow connection to the TCX7 in the next step.

Step 6: Connect & Mount TCX7



Connect Category cable to the TCX7 port labelled "POE." If cable is connected to second port, device will not power on. Before mounting, ensure that other end of the cable is connected to a PoE-capable network. Wait for the TCX7 to power on, and confirm that it has a network connection.



Gently push TCX7 towards device plate, ensuring that the cable does not get pinched, kinked, or bent too sharply, and that there is not excessive stress on the head. Do not bunch cable within bracket.

Align four (4) slots on back of TCX7 with the mounting tabs on the device plate. Once, aligned, push TCX7 towards mounting plate to seat tabs, then press down to lock into place.

Check that all tabs are properly seated into their mounting slots.

The TCX7 Touchscreen Controller is now fully installed. To remove for any reason, simply reverse step 6.