

# Ceiling Mounting Plate

## Installation Guide

### Included in this Product Package:



**A.** Ceiling Mounting Plate (x1)



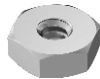
**B.** Microphone Bracket (x1)



**C.** 1 1/2" Cable Grommet (x1)



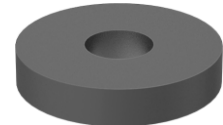
**D.** #6-32 Screw (x2)



**E.** #6-32 Nut (x2)



**F.** #6 Lock Washer (x2)



**G.** 1/4" Rubber Washer (x1)



**H.** Suspension Cable Set (x1)

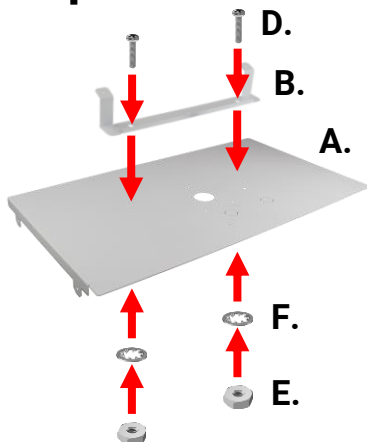
### Step 1: Attach Microphone to Bracket



Remove two (2) Phillips-head screws from bottom of array microphone to remove manufacturer desk stand.

Using same screws, attach microphone to angled flanges of microphone bracket (**B**), with front of microphone angled away from base of bracket.

### Step 2: Attach Microphone Assembly to Ceiling Mounting Plate



#### Step 2.1: For Fixed Orientation

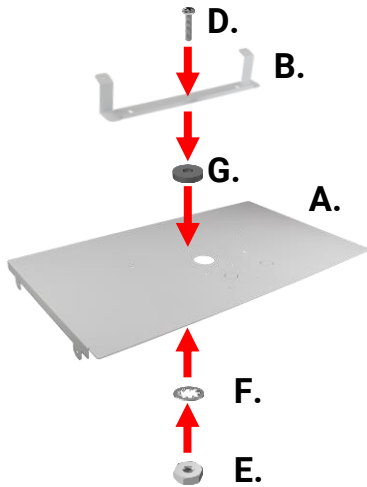
Using the provided two (2) #6-32 screws (**D**), lock washers (**F**), and #6-32 nuts (**E**), attach the microphone bracket (**B**) to the outermost two of the three (3) holes at the front of the ceiling mounting plate (**A**), with the front of the array microphone facing away from the cable passthrough holes.

A 1/4" rubber washer (**G**) will not be used in this configuration.

# Ceiling Mounting Plate

## Installation Guide

### Step 2.2: For Adjustable Orientation

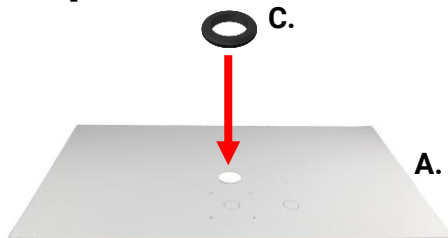


Using one (1) each of the provided #6-32 screw (D), #6-32 nut (E), lock washer (F), and ¼" rubber washer (G), attach the microphone bracket (B) to the middle of the three (3) holes at the front of the ceiling mounting plate (A), with the front of the array microphone facing away from the cable passthrough holes.

The second #6-32 screw (D), #6-32 nut (E), and lock washer (F) will not be used in this configuration.

Once assembly is mounted in ceiling (see Step 7 (Optional): Reorient Microphone), rotate microphone assembly to face directly towards presenter.

### Step 3: Insert Cable Grommets

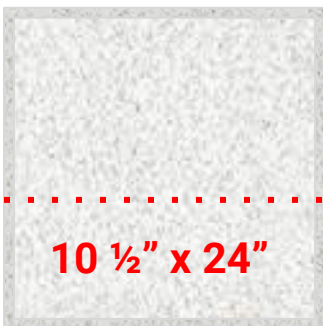


Remove knockout from directly behind microphone mounting bracket. Push 1 ½" cable grommet (C) into hole left by knockout, making sure that grommet is seated properly.

### Step 4: Identify Mounting Location

Ceiling plate should be mounted in drop ceiling grid as near to center of room as possible, ~16 feet from instructor. Ensure that selected mounting location is not directly adjacent to—or in the way of—air conditioning vents, ceiling speakers, or video projectors. Once location is selected, remove ceiling tile.

### Step 5: Cut Ceiling Tile to Size



If using standard 2'x2' acoustic tile, cut down to a width of 10 ½" (overall size 24"x10 ½"). Save remaining portion of ceiling tile for subsequent future installations.

# Ceiling Mounting Plate

## Installation Guide

### Step 6: Mount Ceiling Plate Assembly in Ceiling

Being careful to avoid damaging mounted equipment, lift assembly into place in drop ceiling, ensuring that the microphone is oriented towards the presenter. Secure assembly to ceiling structure (NOT to drop ceiling grid) by looping provided suspension cables (**H**) through mounting tabs and securing. Place cut ceiling tile to fill remaining space in 2'x2' grid square.



For more information on using suspension cables, scan the QR code to download the TEKVOX Ceiling Box Installation Guide.

### Step 7 (Optional): Reorient Microphone

If microphone is mounted according to *Step 2.2: For Adjustable Orientation*, rotate the microphone so that it points towards the center of the area in which the presenter will appear. (**Note:** Microphone bracket cannot be rotated if installed according to *Step 2.1: For Fixed Orientation*)

### Step 8: Connect and Dress Cables

For specific cable connection information, consult system installation guide.

All cables connected to array microphone should pass through large cable grommet directly behind microphone mounting bracket.