

Adecia to DAN-B202

Configuration Guide

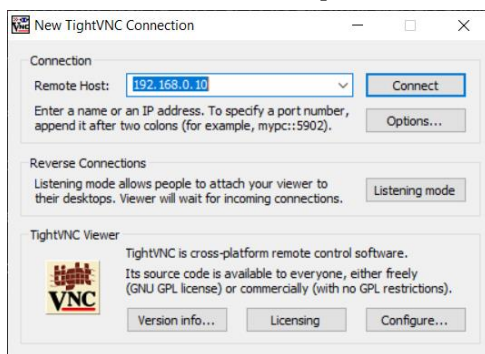
Step 1: Confirm System Installation

Before proceeding with this setup process, confirm that the entire system to be configured is fully-connected and powered. **Note:** If you are not confident about creating a Dante link between the Yamaha Adecia microphone and the TEKVOX Dante interface, contact TEKVOX Support at support@tekvox.com to request remote setup assistance.

Step 2: Access the System TEK-PC

The TEK-PC creates a local A/V sub-Lan for the room, allowing all components to communicate regardless of network status.

2.1 Remote Desktop



Download and install the [TightVNC remote desktop application](#) on a laptop. Using a LAN cable, connect the laptop to the TEKVOX system's network switch. Use TightVNC to access the TEK-PC.

Remote Host Address: 192.168.0.10

VNC Passcode: tekctx9

TEK-PC Account Password: tektpc01

2.2 Direct Connection

Connect an external HDMI monitor to the HDMI Out port of the TEK-PC, and connect a USB mouse and keyboard to any available USB port.

TEK-PC Account Password: tektpc01

Step 3: Setting Up Dante Connection

1. Open the Dante Controller application (should be pinned to the TEK-PC's taskbar)
2. Expand the Dante Transmitters and Receivers section
3. Select DAN-B202 "Reference" as a transmitter to the Y001-Yamaha-RM-CG "Dante 1".

This provides a program audio reference signal for the Adecia's AEC. **Note:** This connection **MUST** be set up inside the Adecia's Web GUI as well.

4. Select Y001-Yamaha-RM-CG "Dante 1" as a transmitter to the DAN-B202 "MicOut"

Adecia to DAN-B202

Configuration Guide

Step 4: Adecia Basic Setup

1. Open the RM Device Finder application (should be pinned to the TEK-PC's taskbar)
2. Select "LAN 2 (192.168.0.10 IP address network)". The "Adecia RM-CG" should appear.

Note: If the Adecia does not appear in Device Finder, click **Refresh**.

3. If the connected Adecia's firmware is out-of-date, select it and click "Firmware Update". The up-to-date firmware file should be saved on the TEK-PC in the **C:\Tekvox\Software\Yamaha** folder. This step can also be done via the Web GUI.
4. Copy the Yamaha Adecia's IP address from the RM Device Finder and paste it into the address bar of a browser on the TEK-PC to navigate to the Adecia's Web GUI.
5. Log in to the GUI and follow the on-screen prompts. Either keep the Admin Password as the default, or set it to "tektpc01".

Default Admin Password: admin

6. In the Audio Processing tab, we recommended adjusting the Adecia's Tracking Area to match the room's configuration.

Other settings in this tab can be left at their default values, or fine-tuned during a test video conference to improve Echo Cancellation or Noise Reduction performance.

For more information on the Adecia's settings, please refer to the Adecia RM-CG User Manual (saved on the TEK-PC in the **C:\Tekvox\Software\Yamaha** folder)

7. In the Audio Dante tab, confirm that the Input Status shows its connection to the DAN-B202's Reference Signal. **Note:** This connection may take several minutes to appear, and may require a power cycle of both devices.

For more in-depth information on the process of setting up the Yamaha Adecia, please refer to the Yamaha Adecia RM-CG Reference Manual (saved on the TEK-PC in the **C:\Tekvox\Software\Yamaha** folder)