

UV570

In-Field Setup Guide

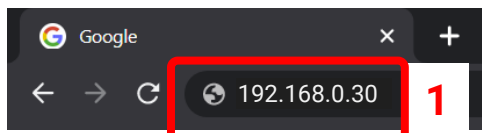
Before Starting

This setup guide is intended for a HyFlex 2 classroom which has been fully installed, including the local A/V network and HDBaseT cabling. The setup process will require a laptop with an Ethernet port, running a modern version of Windows.

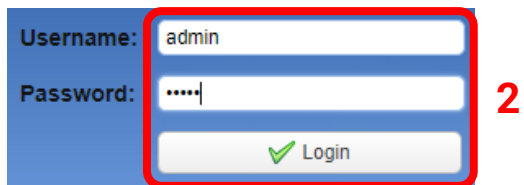
Step 1: Connect Laptop to Local A/V Network

Using an Ethernet cable, connect the Ethernet port of the laptop to an available port on the TEKVOX network switch in the instructor podium equipment rack.

Step 2: Log In to Camera Control Interface



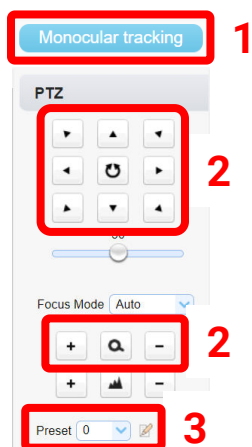
In a web browser on the laptop, navigate to 192.168.0.30. Enter the following information, then click "Login".




Username: admin

Password: admin

Step 3: Set Camera "Begin Tracking" Preset



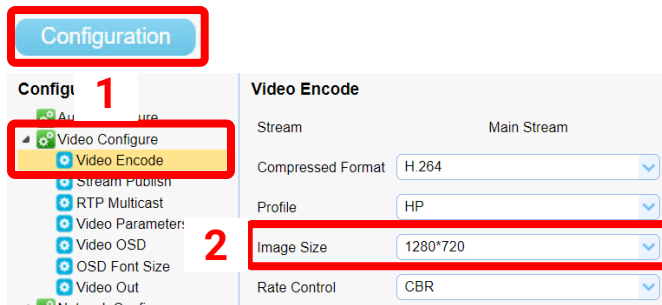
Select the "Monocular Tracking" tab at the top of the page.

In the PTZ menu on the right, use the arrow and zoom buttons to center the camera view on the instructor desk/podium, with several feet above to account for presenters of different heights. Change the "Preset" drop-down menu to "1", then press the  button to set the preset.

UV570

In-Field Setup Guide

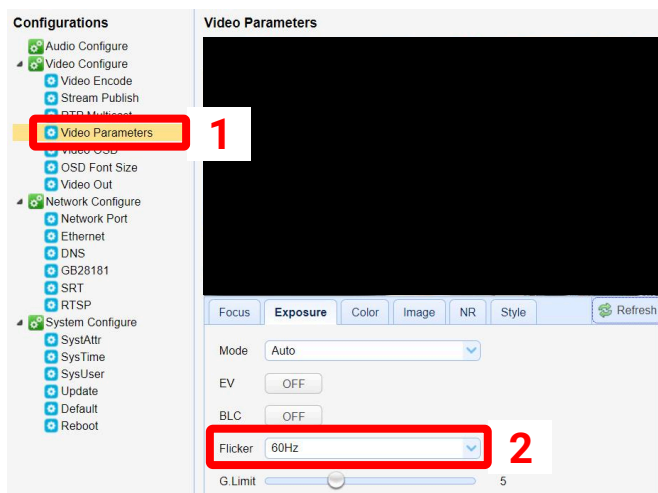
Step 4: Set Camera Video Resolution



Select the “Configuration” tab at the top of the page, then select “Video Encode” from under “Video Configure” in the list on the left side of the page.

Set “Image Size” under “Main Stream” to 1280*720, then click Save.

Step 5: Set Camera Frame Rate



Select “Video Parameters” from under “Video Configure” in the list on the left side of the page.

Set “Flicker” to 60Hz, then power cycle camera. Once camera has rebooted, log back into confirm that the new setting was saved.