

# Ultra Cam + VTIII

## Installation Guide

### Included in this Product Package:



**A.** Ceiling Mounting Plate (x1)



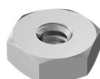
**B.** Microphone Bracket (x1)



**C.** 1 1/2" Cable Grommet (x1)



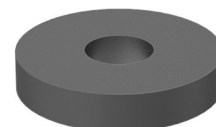
**D.** #6-32 Screw (x1)



**E.** #6-32 Nut (x1)



**F.** #6 Lock Washer (x1)



**G.** 1/4" Rubber Washer (x1)



**H.** Suspension Cable Set (x1)



**I.** Ultra Cam (x1)



**J.** Ultra Cam Wall Bracket (x1)



**K.** 1/4" Machine Screw (x1)



**L.** Ultra Cam Receiver (x1)



**M.** 3.5mm Audio Cable (x1)



**N.** Ultra Cam Power Cable (x1)



**O.** Ground Loop Isolator (x1)



**P.** 75' HDBaseT Cable (x1)

### Step 1: Attach Microphone to Bracket



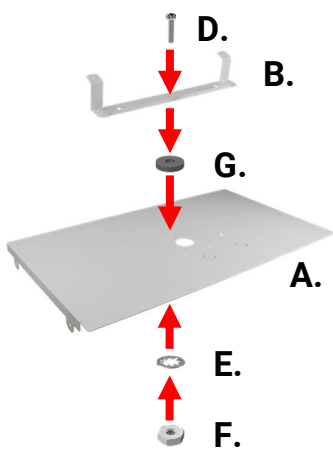
Remove two (2) Phillips-head screws from bottom of array microphone to remove manufacturer desk stand.

Using same screws, attach microphone to angled flanges of microphone bracket (**B**), with front of microphone angled away from base of bracket.

# Ultra Cam + VTIII

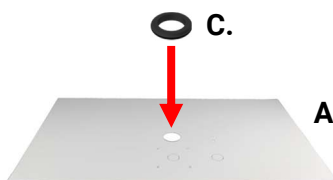
## Installation Guide

### Step 2: Attach Microphone Assembly to Ceiling Mounting Plate



Using the provided #6-32 screw (**D**), #6-32 nut (**E**), lock washer (**F**), and ¼" rubber washer (**G**), attach the microphone bracket (**B**) to the middle of the three (3) holes at the front of the ceiling mounting plate (**A**), with the front of the array microphone facing away from the cable passthrough holes.

### Step 3: Insert Cable Grommet

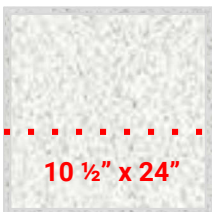


Remove knockout from directly behind microphone mounting bracket. Push 1 ½" cable grommet (**C**) into hole left by knockout, making sure that grommet is seated properly.

### Step 4: Identify Mounting Location for Microphone

Ceiling plate should be mounted in drop ceiling grid as near to center of room as possible, ~16 feet from instructor. Ensure that selected mounting location is not directly adjacent to—or in the way of—air conditioning vents, ceiling speakers, or video projectors. Once location is selected, remove ceiling tile.

### Step 5: Cut Ceiling Tile to Size



If using standard 2'x2' acoustic tile, cut down to a width of 10 ½" (overall size 24"x10 ½"). Save remaining portion of ceiling tile for subsequent future installations.

### Step 6: Mount Ceiling Plate Assembly in Ceiling

Being careful to avoid damaging mounted equipment, lift assembly into place in drop ceiling, ensuring that the microphone is oriented towards the presenter. Secure assembly to ceiling structure (NOT to drop ceiling grid) by looping provided suspension cables (**H**) through mounting tabs and securing. Place cut ceiling tile to fill remaining space in 2'x2' grid square.

# Ultra Cam + VTIII

## Installation Guide



For more information on using suspension cables, scan the QR code to download the TEKVOX Ceiling Box Installation Guide.

### Step 7: Reorient Microphone

Rotate the microphone so that it points towards the center of the area in which the presenter will appear.

### Step 8: Identify Mounting Location for Ultra Cam

The Ultra Cam (I) should be mounted on the back wall, opposite the instructor, above head height. Ensure that there are no obstructions between the Ultra Cam and the area from which the instructor will be presenting.

### Step 9: Mount Bracket on Wall



Using the wall bracket (J) as a guide, trace the locations of the mounting holes and the cable passthrough hole, ensuring that the flat camera mounting surface is level and facing up.

Cut the cable passthrough hole, then mount the Ultra Cam Bracket (J) on the wall using drywall screws and screw anchors (not provided).

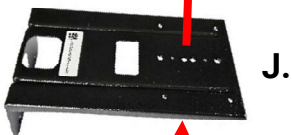
### Step 10: Mount Ultra Cam on Wall Bracket



I.

Set Ultra Cam (I) on the flat top surface of the wall bracket (J), then pass ¼" screw (K) through one of the holes in the bracket and threading it into the hole in the base of the camera.

Make sure that the camera ports are facing the wall, and that the camera base is aligned with the bracket.



J.

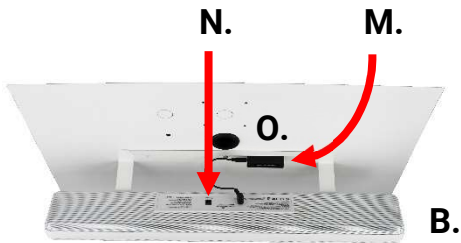


K.

# Ultra Cam + VTIII

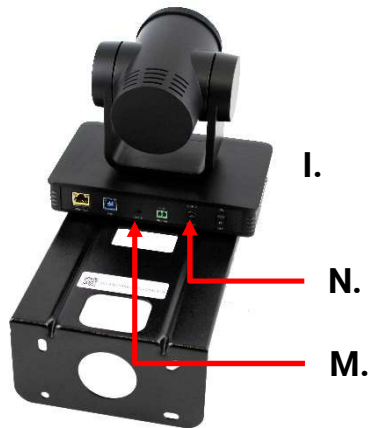
## Installation Guide

### Step 11: Connect Ultra Cam to Microphone

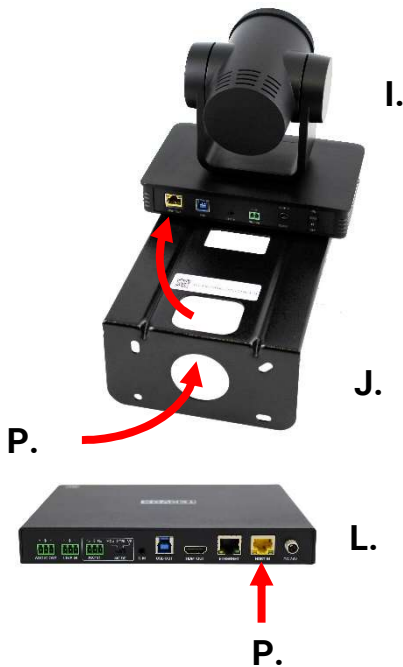


1. Using provided 3.5mm audio cable (**M**) connect the Voice Tracker III (**B**) "Audio Out" port to the Ultra Cam (**I**) "Line In" port via the ground loop isolator (**O**, glued to microphone mounting plate).

2. Using provided power cable (**N**), connect the Voice Tracker III (**B**) "Power" port to the Ultra Cam (**I**) "DC 12V" port.



### Step 12: Connect Ultra Cam to Receiver



Using the provided 75-foot HDBaseT Cable (**P**), connect the Ultra Cam (**I**) "HDBT Out" port to the Ultra Cam Receiver (**L**) "HDBT In" port. At the camera, route the cable through the wall and the cable routing hole in the wall bracket (**J**), then up through one of the slots in the horizontal face of the bracket.

Connect the receiver as desired, depending on the specific application.